



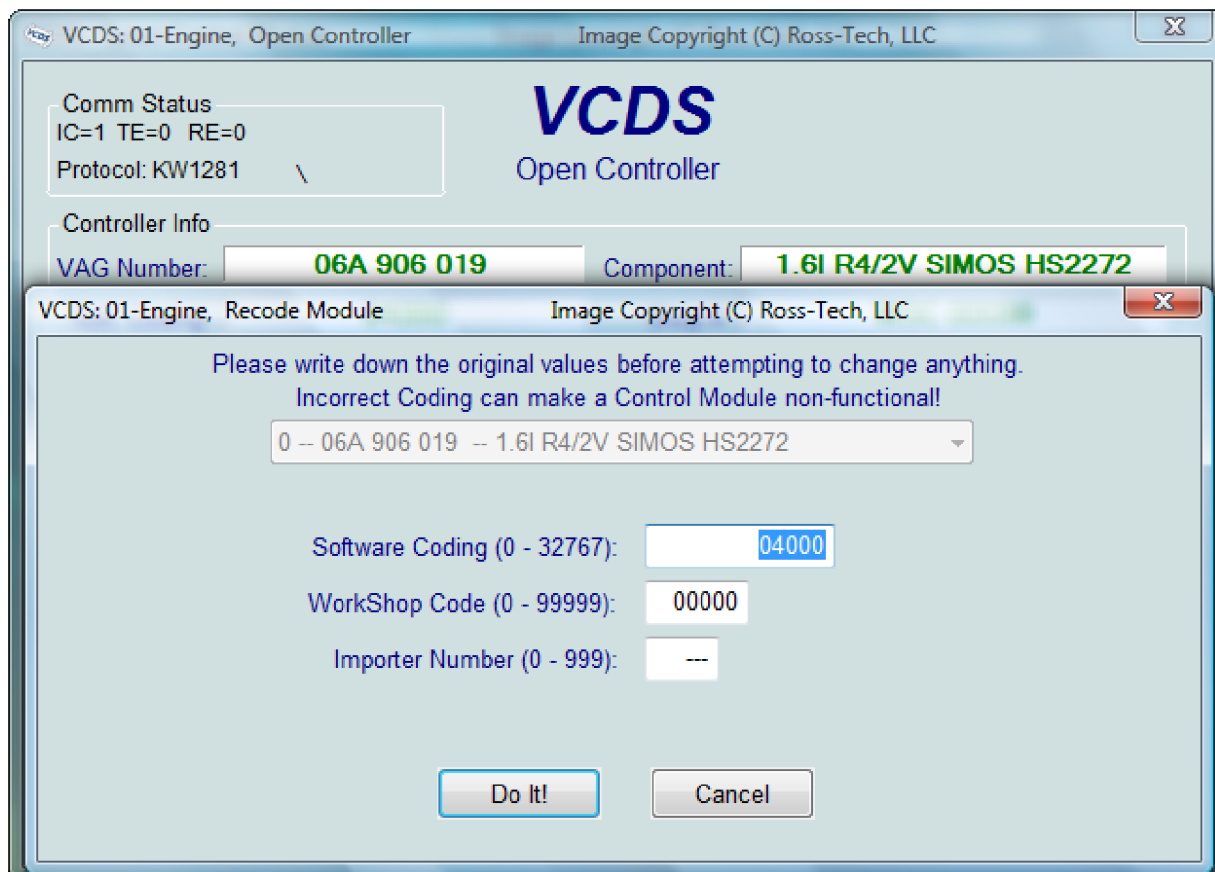
[Home](#)

[Products](#)

[VCDS](#)

[Support](#)

[Online Demo / Manual](#) - **Recode or Long Coding Screen**



Corresponds to VAG 1551/1552 function 07

Recode is used to set various options in a Control Module.

Warning!

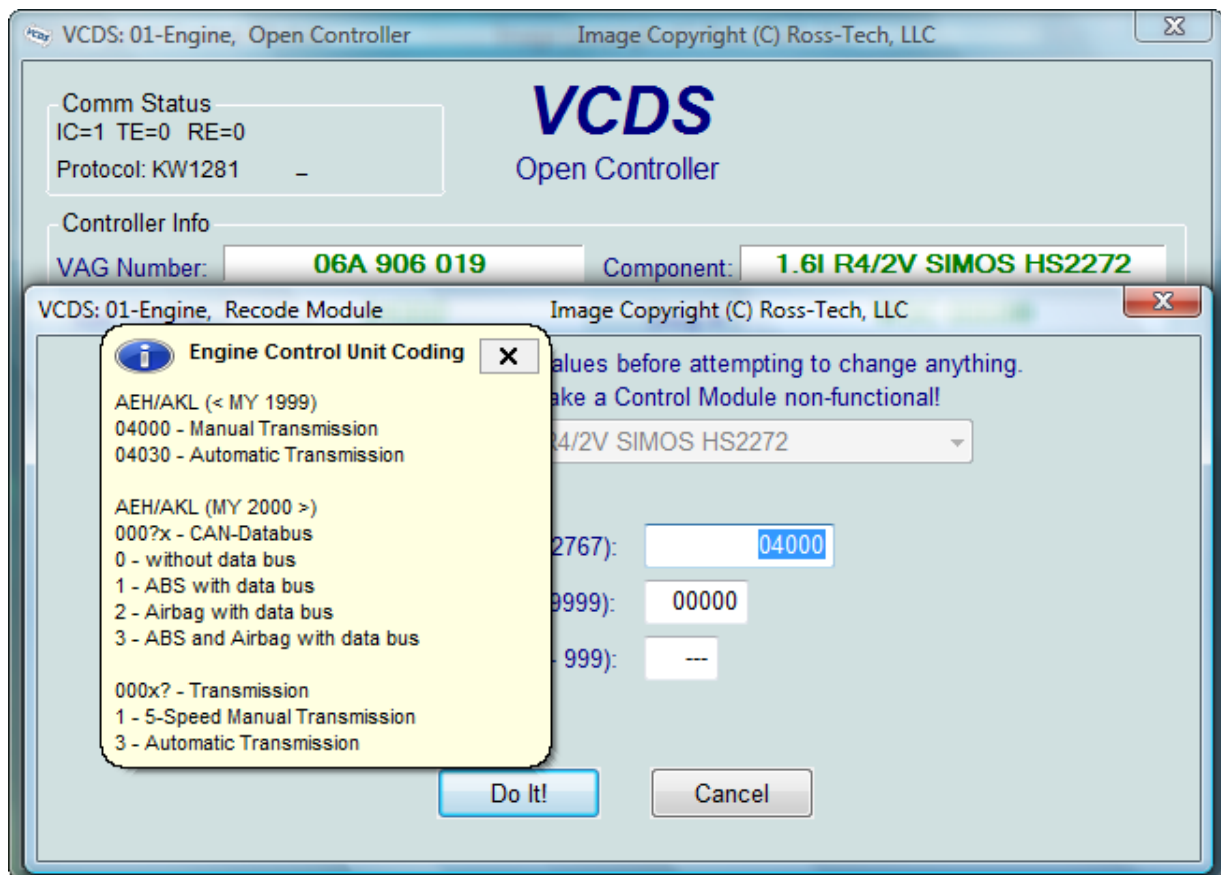
- You should refer to the Factory Repair Manual for your particular car (or some other documented procedure) before attempting to Recode a Control Module. At the very least, write down the original values. There is no other way to "undo" or restore the original values if what you're trying to do doesn't work out.

Notes:

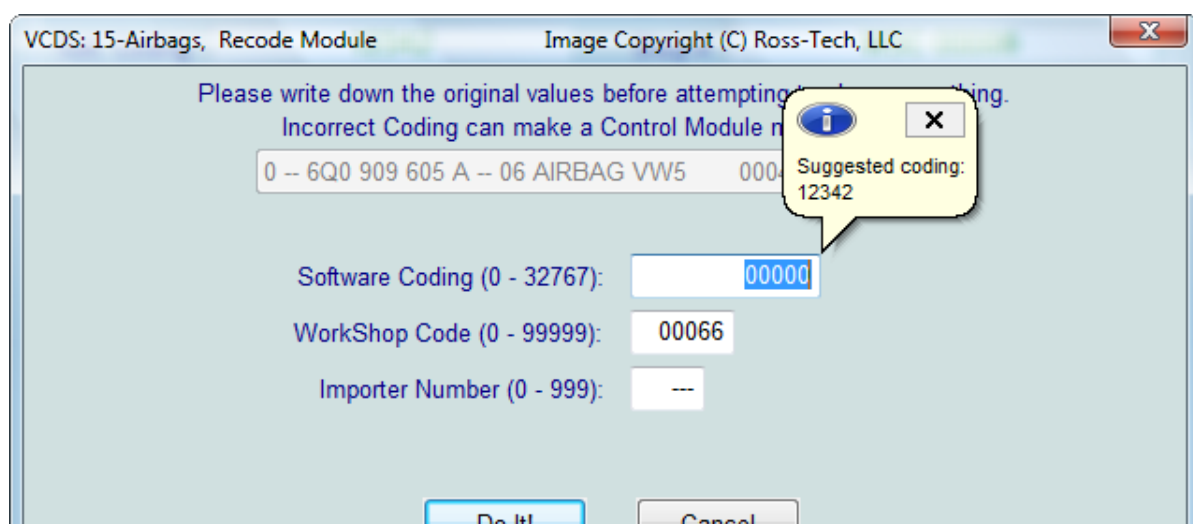
- Some Modules require a valid Login before you can re-code them.
- A feature unique to VCDS:
You can leave the [Work Shop Code](#) unchanged, or enter any workshop code you desire. Certain other programs always leave a tell-tale WSC when you re-code a module.
- The Importer Number is only relevant for recoding controllers that use KWP-2000. By default, this will remain unchanged unless you have set up an Importer Number in the [Options screen](#).
- Up to 20 lines of coding chart data can be included in a Label File. This data is shown in a balloon on the

- Up to 20 lines of coding chart data can be included in a Label File. This data is shown in a balloon on the coding screen.

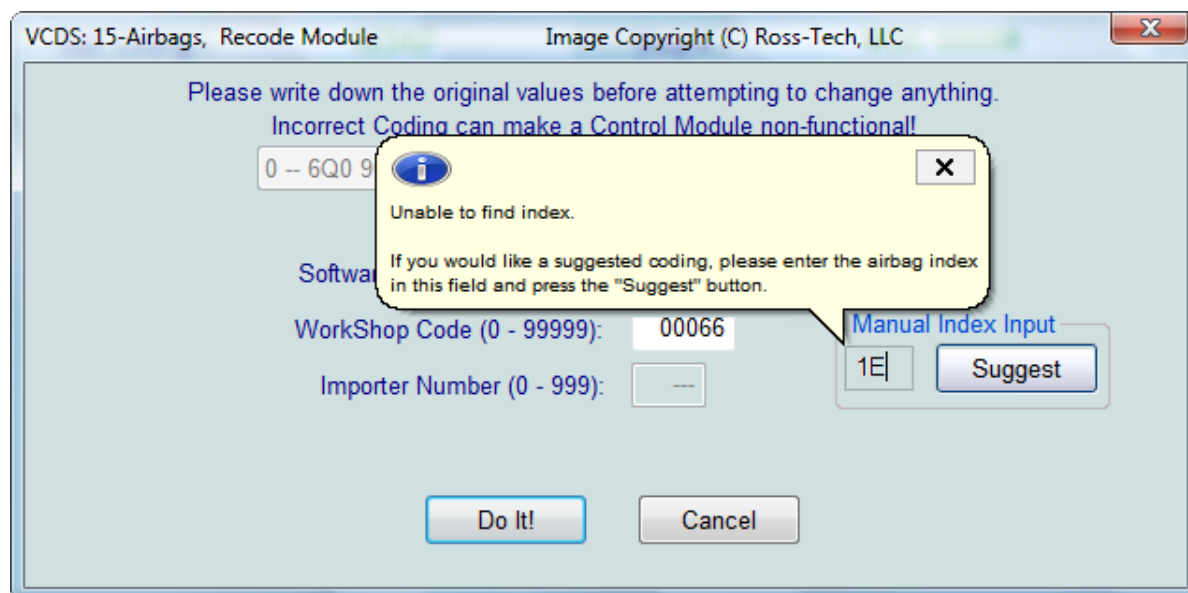
VCDS can show coding "charts" when appropriate information is available in a Label File for the control module in question. A balloon will appear after a few seconds if the Label File contains the appropriate information:



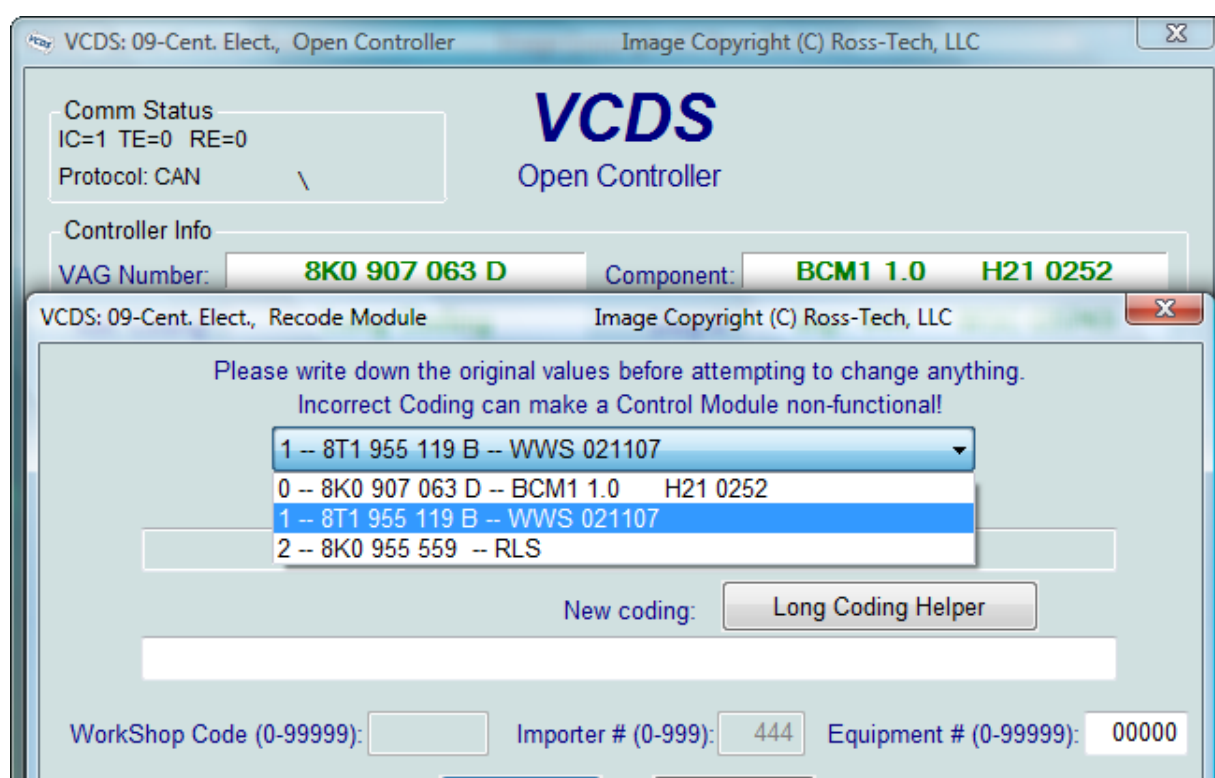
When coding new Airbag Modules in many VW models, VCDS can "Suggest" an appropriate Coding value. This feature is available only when VCDS is used with one of our Professional Grade (HEX) interfaces. Disclaimer: We cannot guarantee that the coding which VCDS may suggest will be correct, but there should be no harm in trying it. If it's not correct, the control module should refuse to accept it and the coding will remain at 00000.



In cases where VCDS would offer Airbag module coding suggestions but cannot determine the Index automatically, VCDS gives you the ability to manually enter an Index (found on the Airbag controller sticker or work order) to get the suggested coding.



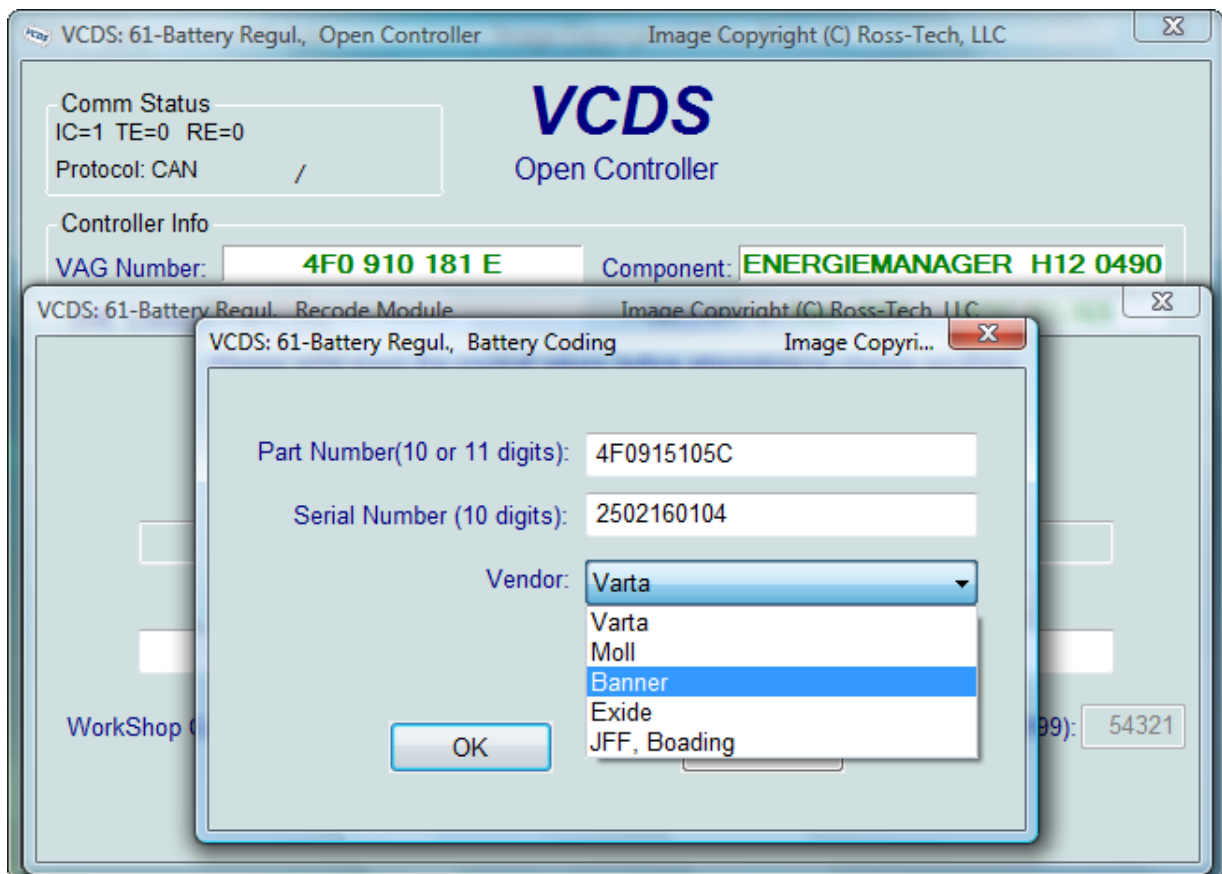
Coding of Slave Modules. On the latest cars, many "slave" modules are codeable. The coding screens (both regular and "long") will present a drop-list of available modules which can be selected for coding:



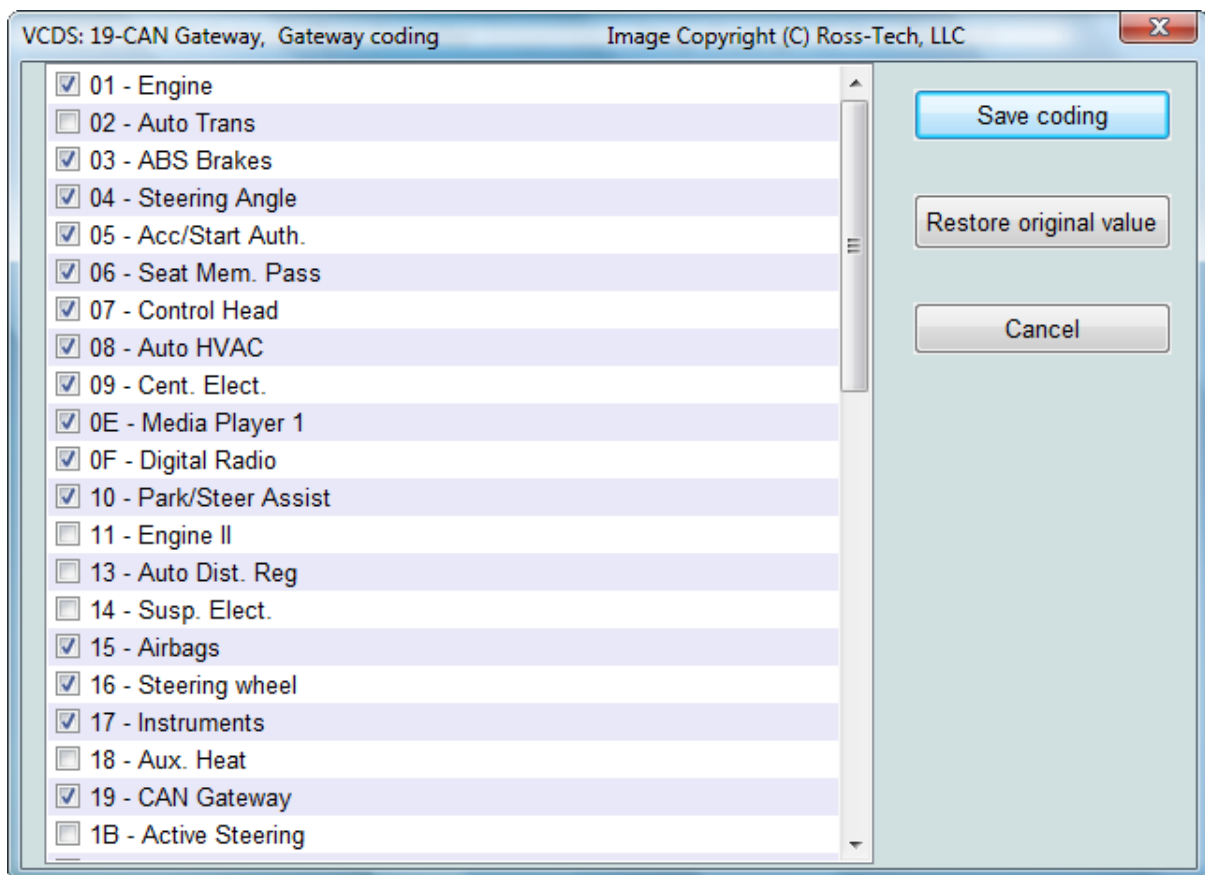


Battery Coding Assistant

For cars that require a replacement battery to be coded in the 61-Battery Regulation module use this function. Note that the 10 digit serial number may be preceded by the battery vendor code, for instance VAO of rVarta. If the code is VAO25402160104 then drop the VAO and just enter 25402160104:



On some new vehicles like the 8T0 (Audi B8 platform), the Gateway Installation is not accessible via Long Coding. In such cases, use the **[Installation List]** button in the Open Controller screen for CAN Gateway to access this screen. This function is available in all Gateways that support an Installation list:

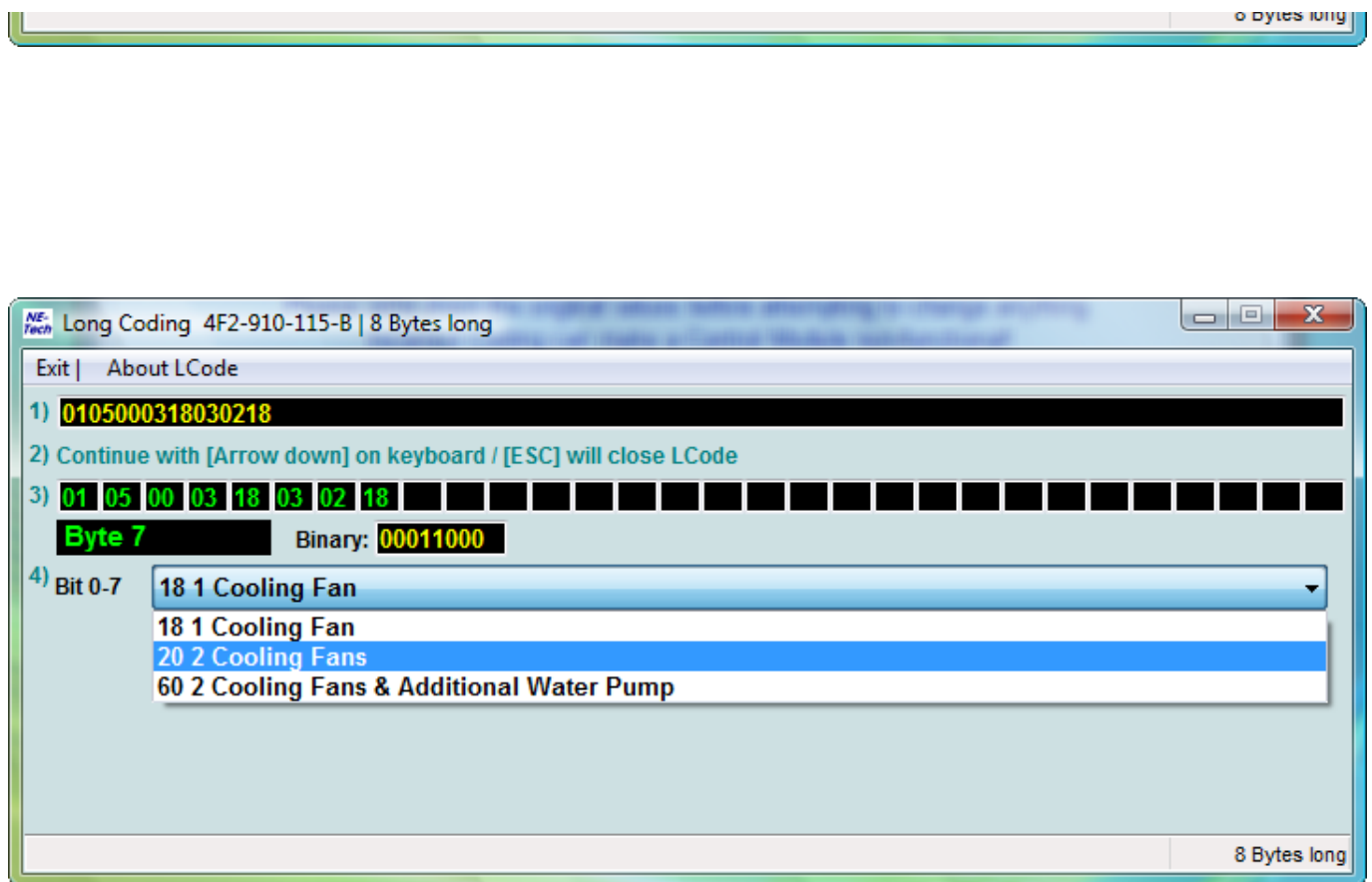


Long Coding. This function is needed to Code some control modules in the newest cars which use CAN for diagnostics. Due to the complexity of Long Coding strings (up to 255 bytes of hexadecimal data) we've accommodated (and urge) the use of Copy & Paste in this function and usage of the Long Coding Helper.



Long Coding Helper is used with applications such as Niels Ezerman's excellent LCode.exe (included with the latest distribution of VCDS):





Click on each of the Byte numbers in row **3**) and you'll see the selectable options below. Check or Un-check the boxes for the desired results. Example: "Adaptive Cruise Control (ACC) installed". In some cases, there will be a drop-down menu that assigns the correct bits for more complex operations.

Close the Long Coding Helper by clicking the Windows X box on the top right of the screen or clicking the Exit button on the top left of the screen to send your altered Coding value back to the Coding screen.

Use the **[Do It!]** button in to save the new Soft Coding to the controller and return to the Open Controller Function screen.

Use the **[Cancel]** button to return to the Open Controller Function screen without saving.

[Home](#)

[Products](#)

[VCDS](#)

[Support](#)

[Online Demo / Manual](#) - **Recode or Long Coding Screen**
